

Gap Closure Study

Hartford County, CT

Project Statistics

Alignment C is a proposed:

- 5.3 miles long,
- 10-12' wide,
- bituminous,
- 98% multi-use trail.

Alignment C - 5.3 Miles | North Section

Source Information: Map and Geographic Information Center - University of Connecticut, US Census Bureau
Service Layer Credits: Esri, DigitalGlobe, GeoEye, Earthstar Geographics, CNES/Airbus DS, USDA, USGS, AeroGRID, IGN, HERE, DeLorme, MapmyIndia, © OpenStreetMap contributors, and the GIS user community

Disclaimers: The alignment shown is preliminary and not to scale. It is for planning purposes only. Alignments are subject to change as the planning study progresses. Labels represent potential options for the trail, should it be built. They do not represent a final design and are subject to change during the design process.



Town Boundary

Active Rail

Robertson Airport

Alignment C - 5.3 Miles - 98% Multi-Use Trail

Potential Alternates

Farmington Canal Heritage Trail, under construction/design

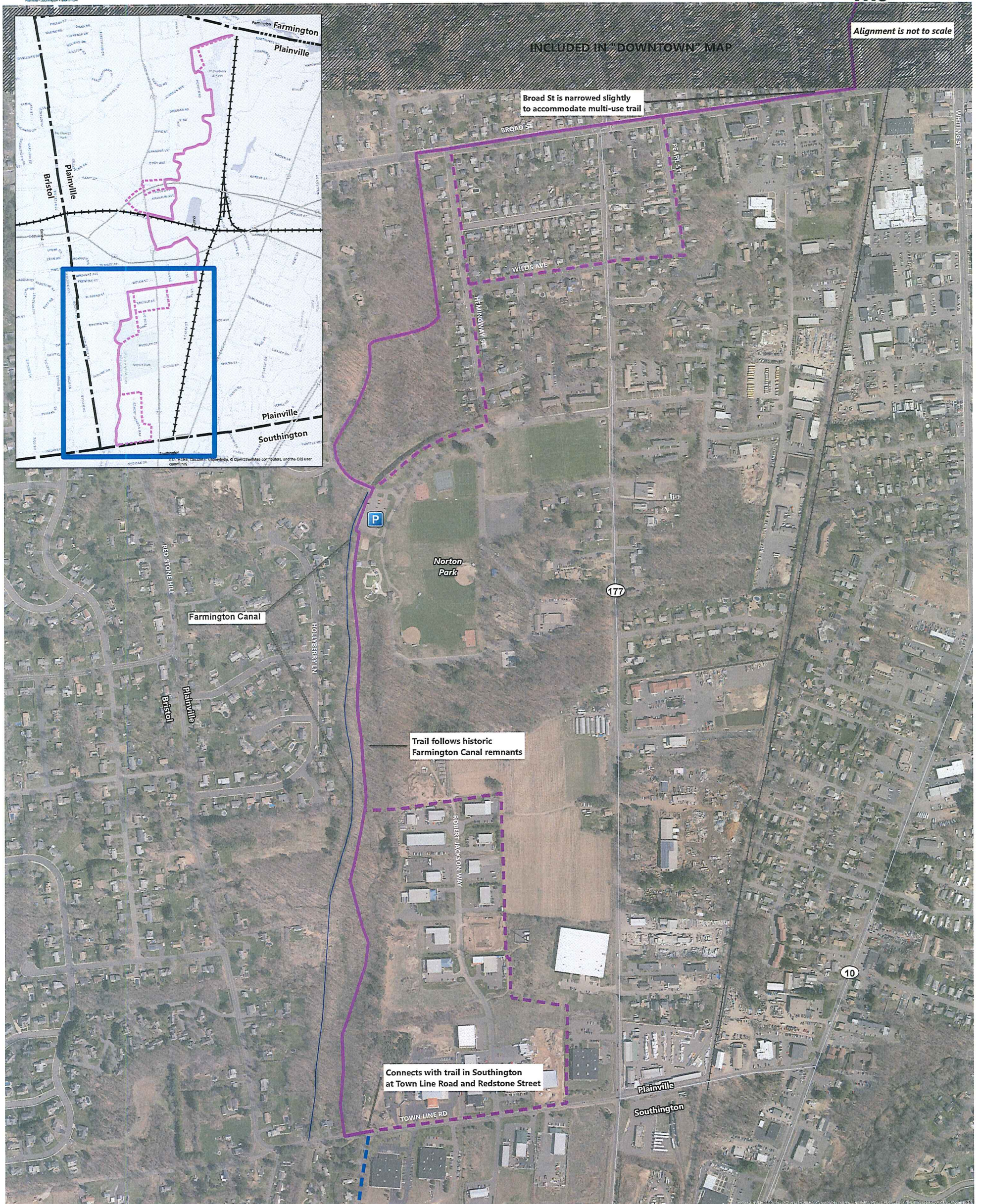
Disclaimers: The alignment shown is preliminary and not to scale. It is for planning purposes only. Alignments are subject to change as the planning study progresses. Labels represent potential options for the trail, should it be built. They do not represent a final design and are subject to change during the design process.

Gap Closure Study

Project Statistics
Alignment C is a proposed:
- 5.3 miles long,
- 10-12' wide,
- bituminous,
- 98% multi-use trail.

Hartford County, CT

Alignment C - 5.3 Miles | Downtown Section
Source Information: Map and Geographic Information Center - University of Connecticut, US Census Bureau
Service Layer Credits: Esri, DigitalGlobe, GeoEye, Earthstar Geographics, CNES/Airbus DS, USDA, USGS, AeroGRID, IGN, HERE, DeLorme, MapmyIndia, © OpenStreetMap contributors, and the GIS user community



Disclaimers: The alignment shown is preliminary and not to scale. It is for planning purposes only. Alignments are subject to change as the planning study progresses. Labels represent potential options for the trail, should it be built. They do not represent a final design and are subject to change during the design process.

Gap Closure Study

Hartford County, CT

Project Statistics

Alignment C is a proposed:

- 5.3 miles long,
- 10-12' wide,
- bituminous,
- 98% multi-use trail.

Alignment C - 5.3 Miles | South Section

Source Information: Map and Geographic Information Center - University of Connecticut, US Census Bureau
Service Layer Credits: Esri, DigitalGlobe, GeoEye, Earthstar Geographics, CNES/Airbus DS, USDA, USGS, AeroGRID, IGN, HERE, DeLorme, MapmyIndia, © OpenStreetMap contributors, and the GIS user community