

PLAINVILLE CAPITAL IMPROVEMENT School Building Projects



PLAINVILLE CAPITAL IMPROVEMENT School Building Projects

CAPITAL PROJECTS **BUILDING COMMITTEE MEMBERS:**

Mark Belanger, Chairman

Thomas Arcari

Tom Lozaw

Steve Martino

Richard Negro

Ken Restelli

Jim Tufts

Dr. Maureen Brummett, Superintendent of Schools

Sam Adlerstein, Director of Business and Operations

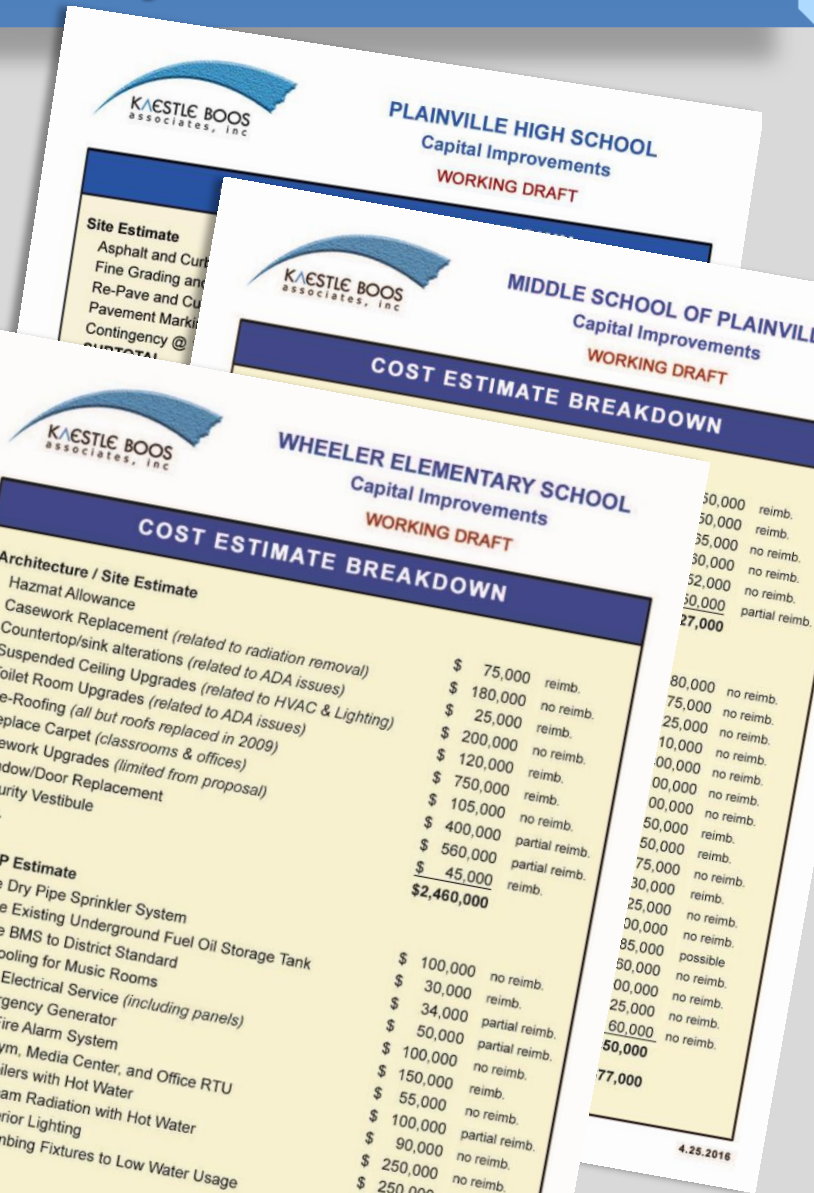
Steve Busel, Facilities Director

Robert E. Lee, Town Manager

PLAINVILLE CAPITAL IMPROVEMENT School Building Projects

Where it all began...

- Capital Improvements requested by the Town of Plainville (2014-2016):
 - Middle School of Plainville
 - Sitework at Plainville High School
 - Frank T. Wheeler Elementary School



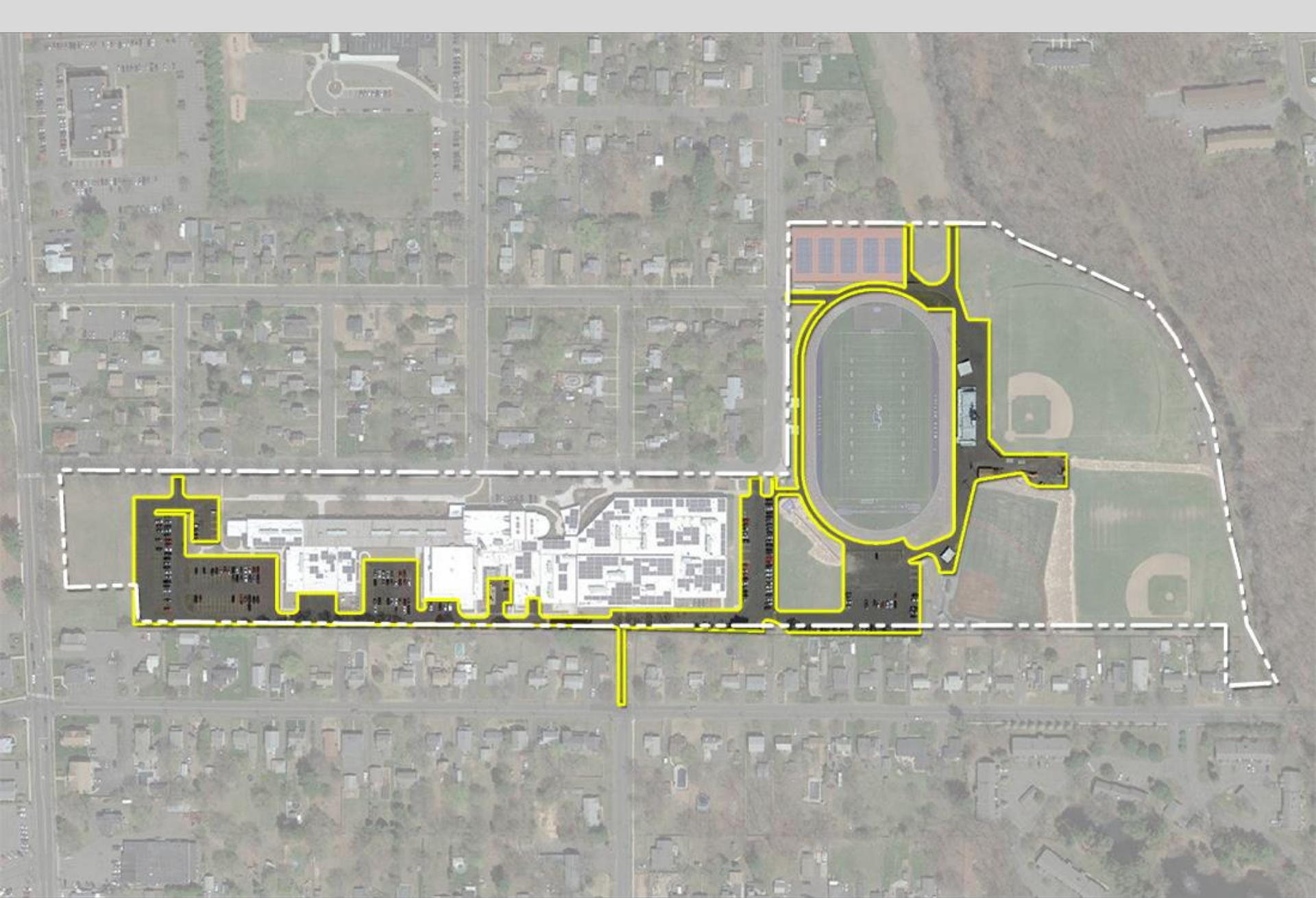


AREAS OF NEW
PVC ROOF.

AREAS OF NEW
RIBBED PVC ROOF.

March 1, 2017

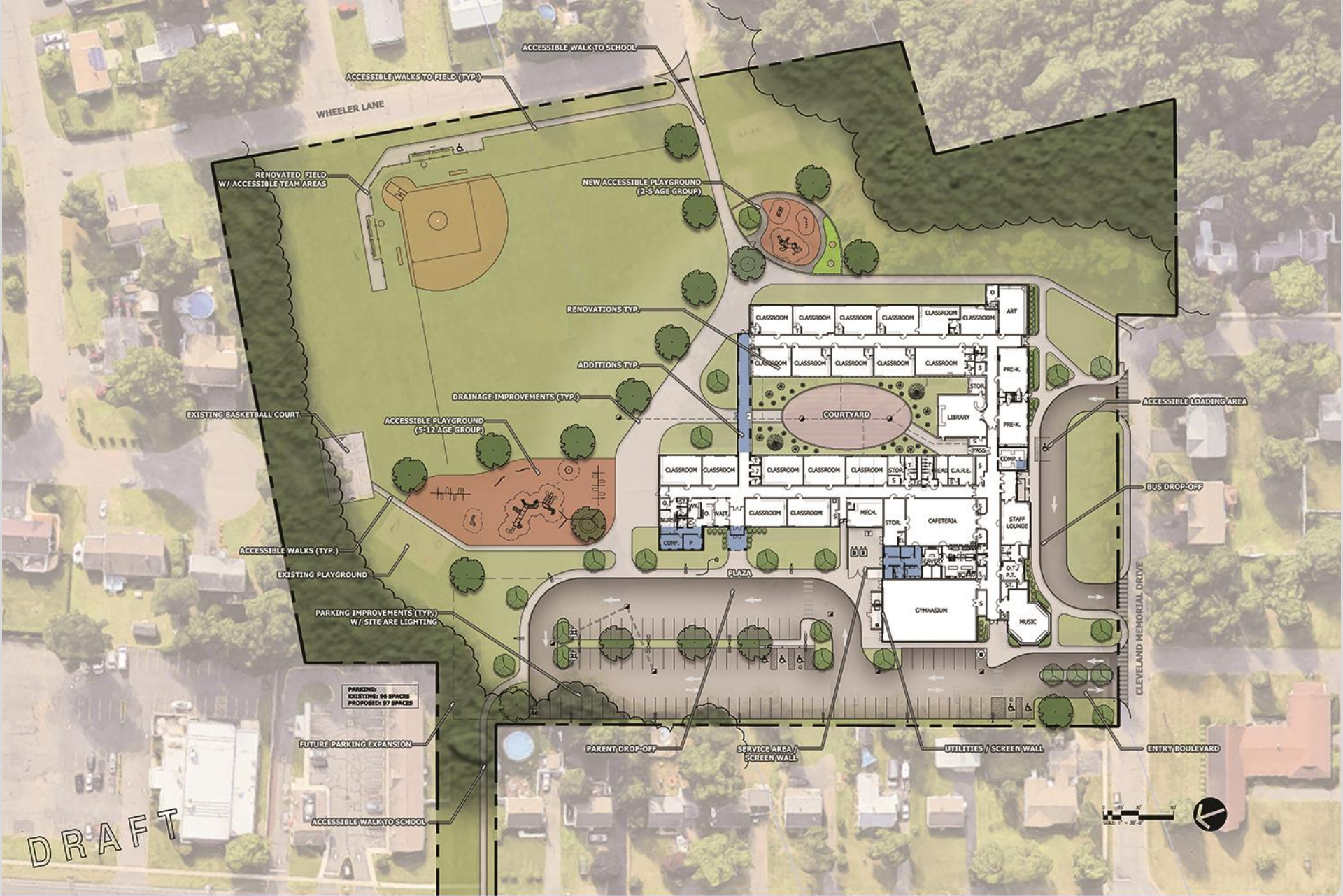
MIDDLE SCHOOL OF PLAINVILLE – Roof Replacement



PLAINVILLE CAPITAL IMPROVEMENT School Building Projects

- **Meeting with the Office of School Construction Grants & Review to discuss reimbursement, changed the initial project scope**
- **To maximize State Reimbursement (2016):**
 - replace roof at the Middle School of Plainville and research energy performance contracts
 - site improvements at Plainville High School
 - renovate-as-new Frank T. Wheeler Elementary School
 - review educational needs
 - review all building systems
 - review entire site





DRAFT

WHEELER ELEMENTARY SCHOOL - Additions & Renovations

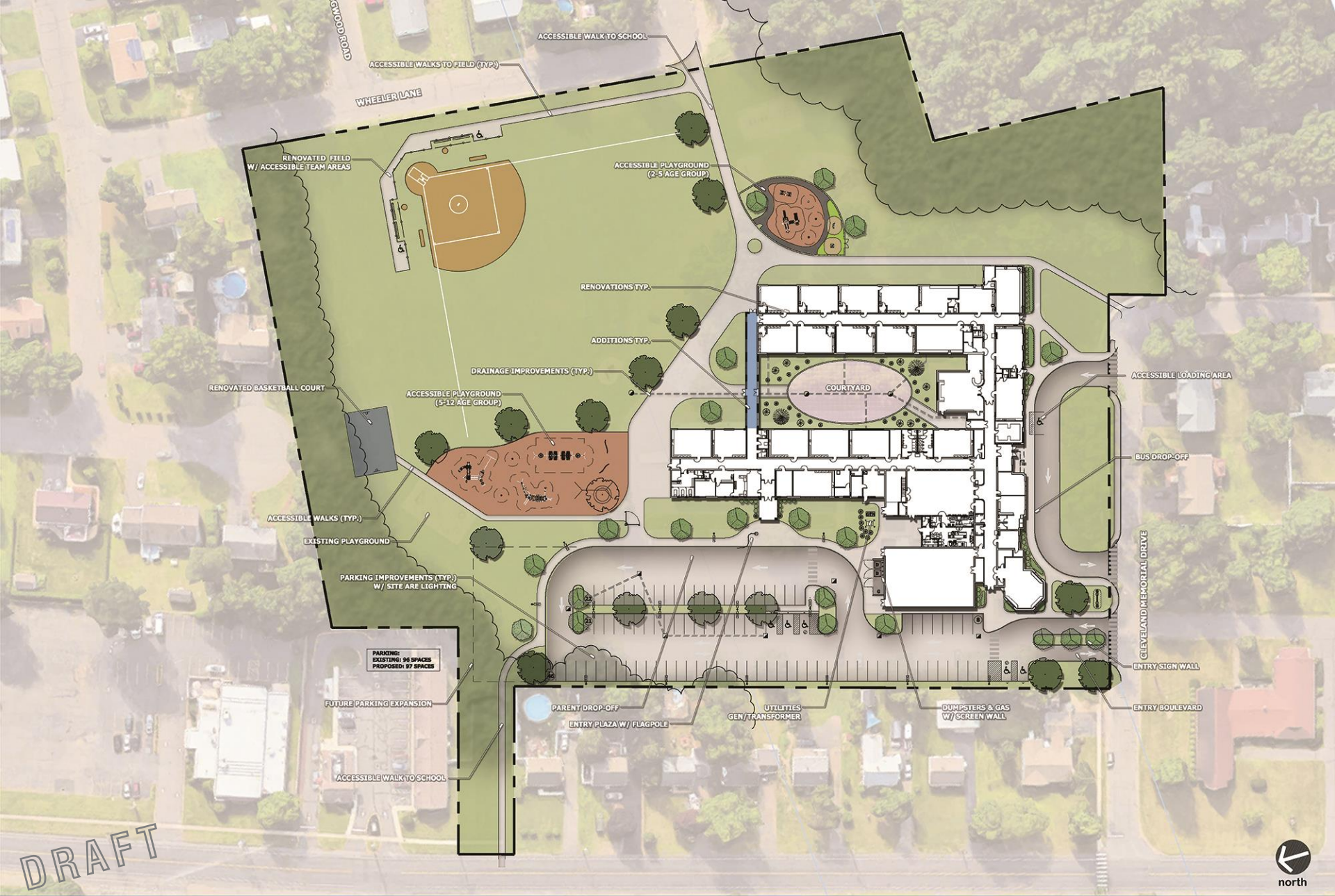
January 25, 2017

KAESTLE BOOS ASSOCIATES, INC

PLAINVILLE CAPITAL IMPROVEMENT School Building Projects

- **Met with the Office of School Construction Grants & Review to discuss the revised project scope for Frank T. Wheeler Elementary School**
- **State suggested changes to the project scope:**
 - Reduction of new construction square footage





MARCH 1, 2017

WHEELER ELEMENTARY SCHOOL - Additions & Renovations

AREA CALCULATIONS	
EXISTING BUILDING	50,976 GROSS SQ. FT. 49,089 NET SQ. FT.
ADDITIONS	+1,166 GROSS SQ. FT. +974 NET SQ. FT.
TOTAL BUILDING AREA	52,142 GROSS SQ. FT. 50,063 NET SQ. FT.

- ADDITION
- EXISTING / HEAVY RENOVATION
- EXISTING / LIGHT RENOVATION



DRAFT



north



MARCH 1, 2017

WHEELER ELEMENTARY SCHOOL - Additions & Renovations

PLAINVILLE CAPITAL IMPROVEMENT School Building Projects

MIDDLE SCHOOL OF PLAINVILLE

Roofing	\$ 2,112,334
Estimated State Reimbursement	<u>\$ 1,307,315</u>
Estimated Net Cost to Plainville	\$ 805,019

PLAINVILLE HIGH SCHOOL

Sitework	\$ 1,741,769
----------	--------------

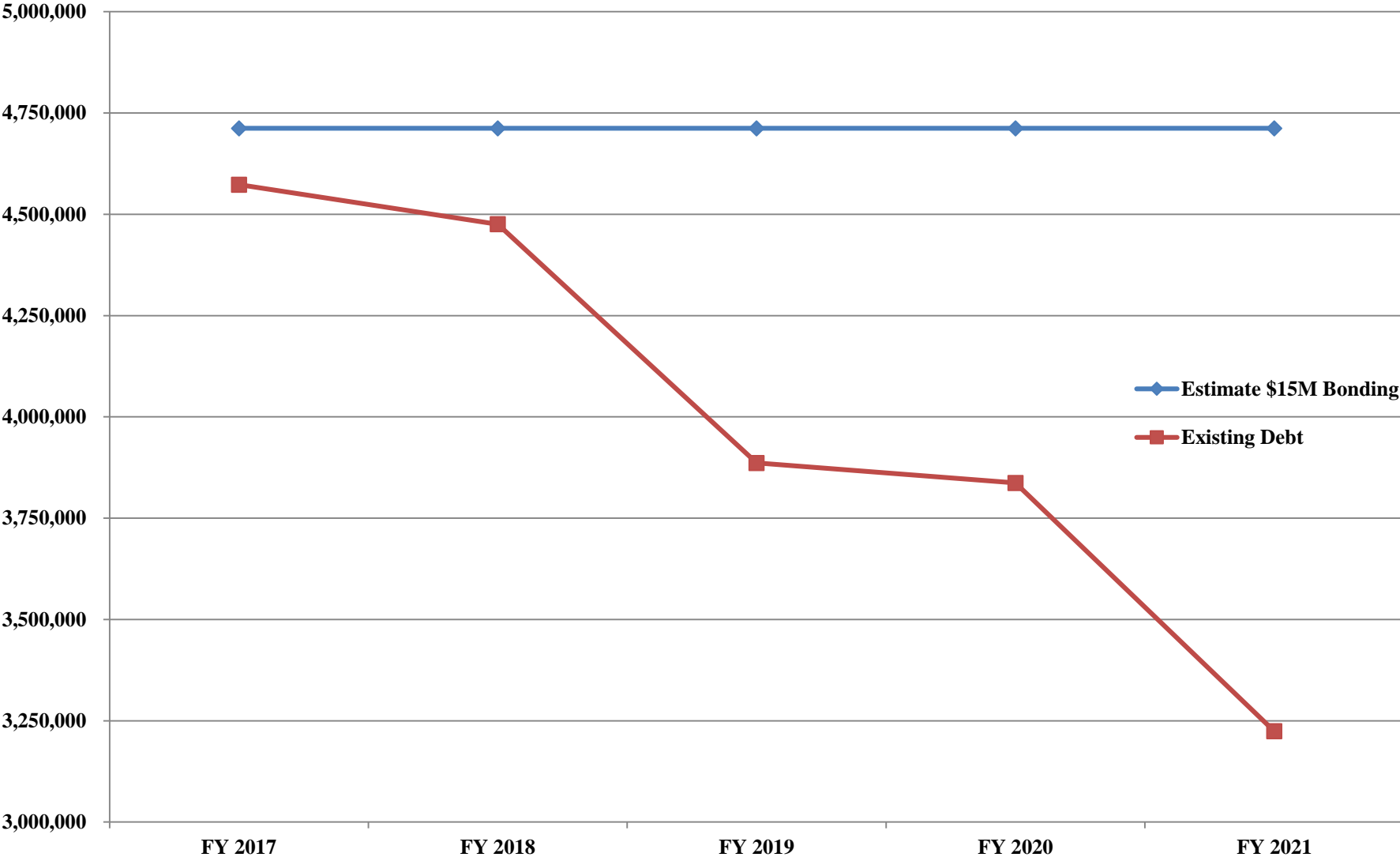
WHEELER ELEMENTARY SCHOOL

Renovate As New	\$23,513,789
Estimated State Reimbursement	<u>\$12,106,957</u>
Estimated Net Cost to Plainville	\$11,406,832
(assumes SF waiver from State of CT)	

Total Estimated Cost: MSP, Wheeler ES, Plainville HS \$27,367,892

Total Estimated Net Cost to Plainville: \$13,953,620
MSP, Wheeler ES, Plainville HS

Debt Service FY 2017 – FY 2021



Town of Plainville ~ DEBT SERVICE

FY	Principal	Interest	Miscellaneous	Xfer to Debt Manage	Total	Annual Change	
						\$	%
2017	3,580,000	957,994	35,000	139,300	4,712,294	-	0.00%
2018	3,585,000	855,325	35,000	236,969	4,712,294	-	0.00%
2019	3,115,000	736,300	35,000	825,994	4,712,294	-	0.00%
2020	3,185,000	617,000	35,000	875,294	4,712,294	-	0.00%
2021	2,700,000	489,100	35,000	1,488,194	4,712,294	-	0.00%

The Town has refinanced all older debt over the last four Fiscal Years (FY), saving over \$1.2M in future debt payments without extending the life of the debt. After FY 2017, the Town has six outstanding bond obligations totaling \$23,440,000, principal and interest, due through FY 2031. Does not include WPCF or short term BAN's.



Q & A